

WELCOME PACK

**SASLED
TRANSNATIONAL PROJECT MEETING
DUBLIN, IRELAND**

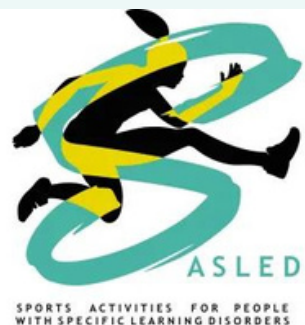
13:30 ON NOVEMBER 30 – 13:30 ON DECEMBER 1, 2023



CO-FUNDED BY THE
ERASMUS+ PROGRAMME
OF THE EUROPEAN UNION



**SPORTS ACTIVITIES FOR PEOPLE WITH SPECIFIC
LEARNING DISORDERS (SASLED)**

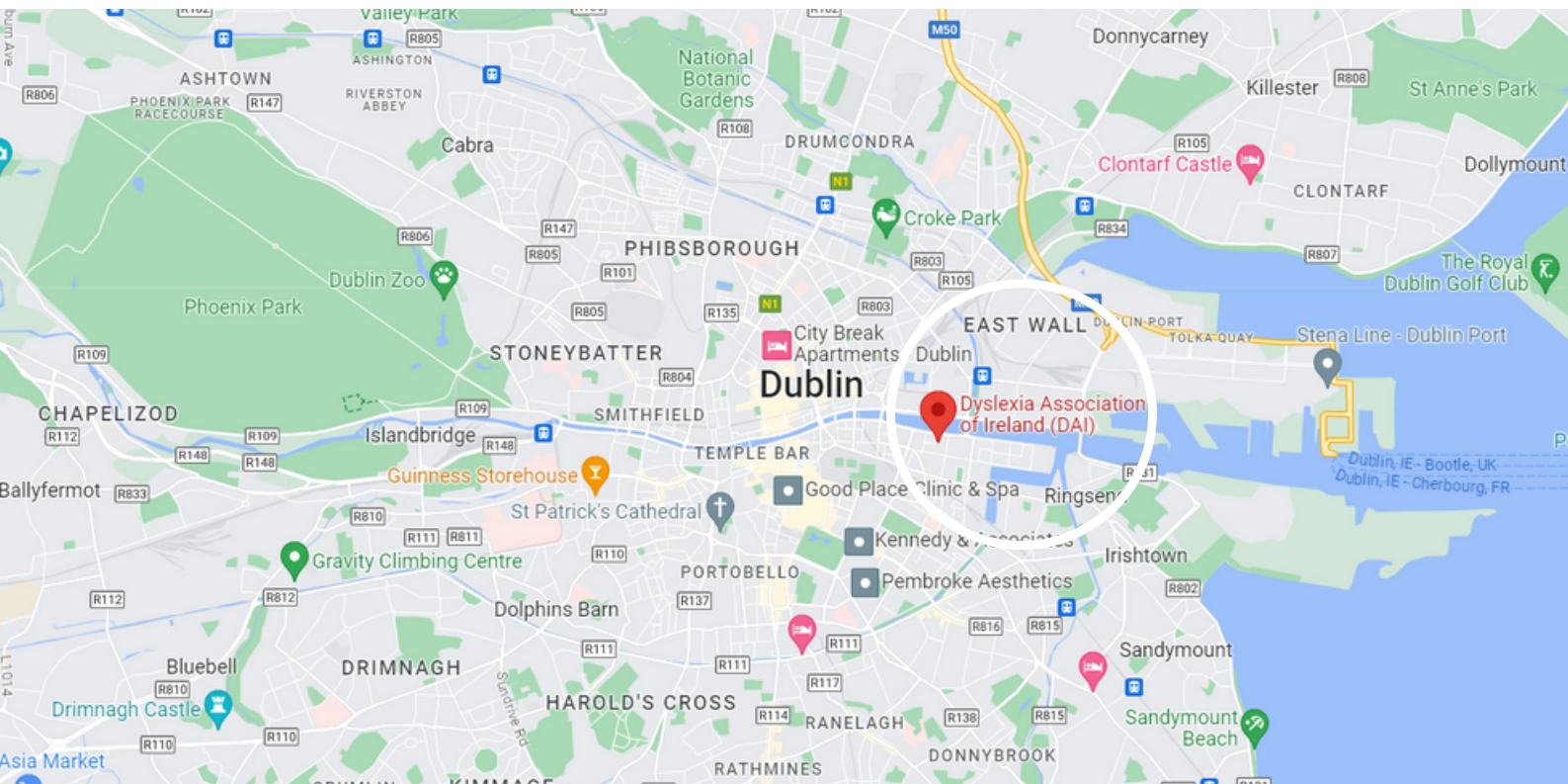


OUR LOCATION

**DYSLEXIA ASSOCIATION OF IRELAND
BLOCK B, THE WINDMILL, 107-110 WINDMILL LANE,
DUBLIN DOCKLANDS
D02 E170**



GOOGLE MAPS



TRANSPORT LINKS

TRANSPORT LINKS BETWEEN DUBLIN CITY AND DUBLIN AIRPORT (DUB)

Transport	Cost (approx.)	Duration (approx.)
Taxi Hail a taxi at the airport or order one using the FREENOW app	€25 - €40 (depends on traffic congestion, size of group etc.)	35 minutes (depends on traffic congestion)
Aircoach (express bus) Take the 700 route - click here for directions to the Aircoach stops at Terminal 1 and Terminal 2	One way fare is €7 - €10 (best price if you buy your ticket online here) You can also buy a ticket on the bus	35 - 40 minutes between Dublin airport and the main city centre Aircoach stops (O'Connell St, O'Connell Bridge, Kildare St.)
Dublin Express Bus The most regular bus service - stops located directly outside arrivals at Terminals 1 and 2	One way fare is €8 (buy your ticket online here)	Between 25 and 40 minutes

Aircoach



Dublin Express



HOTELS



Travelodge PLUS Dublin

- 7 minute walk to DAI offices
- Click to [book](#)



Staycity Aparthotels

- Dublin City Quay location
- 8 minute walk to DAI offices
- Click to [book](#)



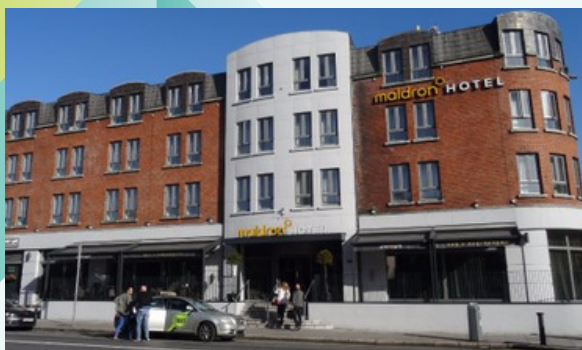
Hilton Garden Inn

- 7 minute walk to DAI offices
- Click to [book](#)



Spencer Hotel

- 8 minute walk to DAI offices
- Click to [book](#)

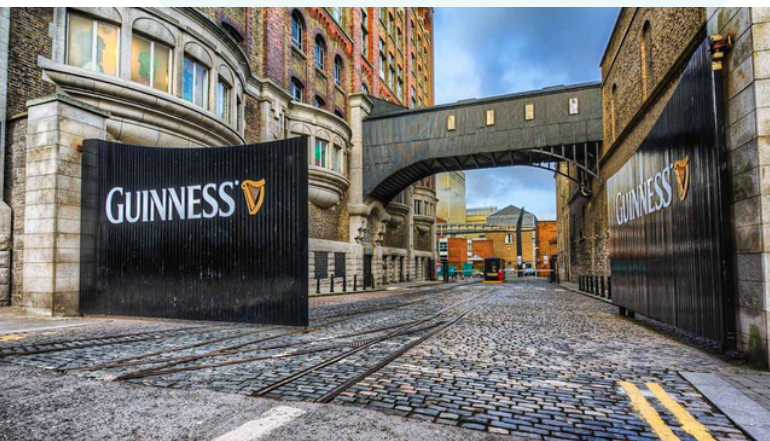


Maldron Pearse Street

- 7 minute walk to DAI offices
- Click to [book](#)



TO DO & SEE



Guinness Storehouse

Click to [book](#)



The Book of Kells

Trinity College Dublin Library

Click to [book](#)



EPIC - The Irish Emigration Museum

Click to [book](#)



St Stephen's Green Park



National Botanic Gardens



Phoenix Park



FOOD & DRINK

Coffee Shops	Breakfast/Lunch	Dinner
<ul style="list-style-type: none">• <u>Gerard's Deli</u>• <u>Bread 41</u>• <u>Perpetua</u>• <u>Beanhive Coffee</u>• <u>Kaph</u>	<ul style="list-style-type: none">• <u>KC Peaches</u>• <u>The Pepperpot</u>• <u>Sprout & Co</u>• <u>Xian Street Food</u>• <u>Cornucopia</u> (vegan)	<ul style="list-style-type: none">• <u>Bunsen</u> (burgers)• <u>Carluccio's</u> (pasta)• <u>Pi</u> (pizza)• <u>Yamamori</u> (sushi)• <u>Govinda's</u> (vegan)

Pubs/Bars

- Dockers
- The Ginger Man
- O'Donoghue's
- Toners
- The Stag's Head
- The Hairy Lemon





dyslexia

association of ireland

